

Monolithic crystal filter

MQF21.4-1700/09



Application

- 8 pol filter
- i.f.- filter
- use in mobile and stationary transceivers

Limiting values

		Unit	Value
Center frequency	f_0	MHz	21.4
Insertion loss		dB	≤ 3.5
Pass band at 3.0 dB		kHz	± 8.50
Ripple in pass band	$f_0 \pm 7.00$ kHz	dB	≤ 2.0
Stop band attenuation	$f_0 \pm 18.5$ kHz	dB	≥ 60
	$f_0 \pm 30$ kHz	dB	> 90
Alternate attenuation	$f_0 \pm 30 \dots 5000$ kHz	dB	> 90 except spurious

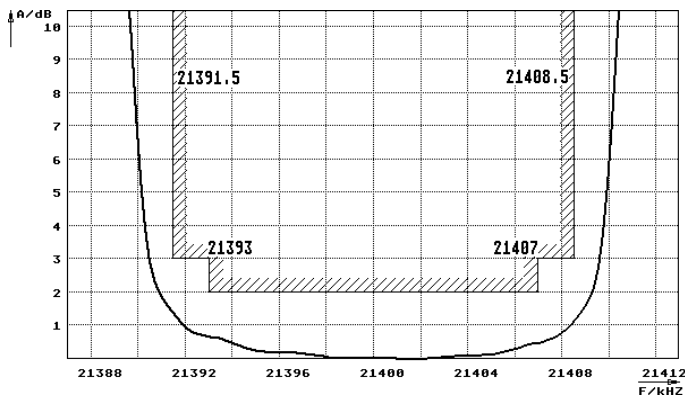
Terminating impedance Z

R1 C1	Ohm/pF	910 25
R2 C2	Ohm/pF	910 25

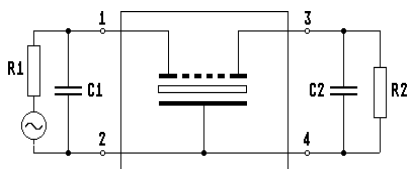
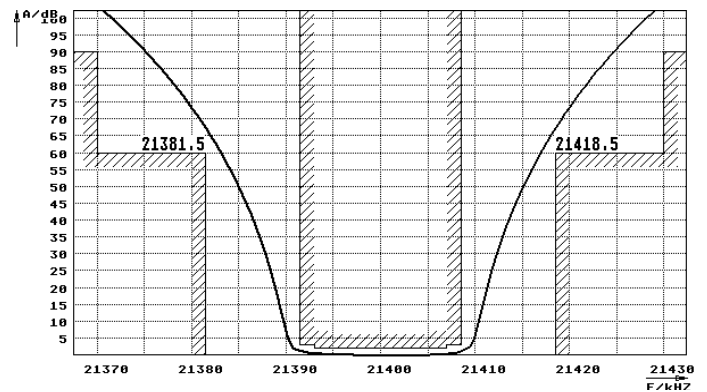
Operating temp. range	$^{\circ}\text{C}$	-20... +70
-----------------------	--------------------	------------

Characteristics MQF21.4-1700/09

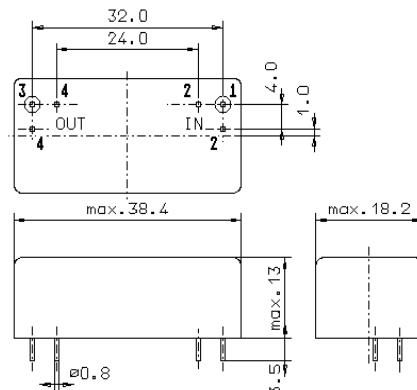
Pass band



Stop band



Pin connections: 1 Input
2 Input-E
3 Output
4 Output-E



GM17